

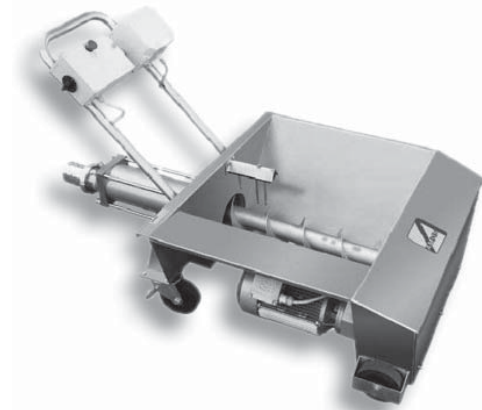
PUMPS

MUST PUMPS AMOS – AMP

Advantages:

- Gentle handling of grapes and pomace thanks to slow rotation, large impeller and two-speed motor.
- Easy-to-clean thanks to simple design and construction.
- Suitable for whole grapes, crushed grapes, fermented masses and other viscous composites
- Large load surface, reduced height
- All parts in contact with products (except for stator) are in AISI304 stainless steel.
- Cable rotor notably reduces vibrations
- Two-speed motor (standard) allows rpm to be cut 50%
- Choice of manual or optional automatic control
- Optional dry operation protection
- Optional sensor controls min/max levels and automatic change over to 2nd speed.
- Optional casters can be installed on standard static structure (models 1050 and larger)
- Pump can be installed under AMOS AKS destemers

Model	1st speed		2nd speed		Port out
	T/h	rpm	T/h	rpm	DN
610	6	145	12	290	60
820	10	110	20	220	80
830	15	145	30	290	80
1030	20	70	40	140	100
1050	25	120	50	240	100
1280	40	110	80	220	120
1580	50	85	100	170	150



ROTARY LOBE PUMPS

- Omac positive displacement pumphead.
- Wash down duty electrical motor.
- Mounted on stainless steel cart with pneumatic tires.
- Electronic variable speed drive in enclosure with 50' remote control cord.
- Forward/reverse and start/stop operation
- Includes 30' electrical power cord
- High-pressure capabilities.
- Available in 1" to 8" port sizes.

Options include:

- Rotor styles: Bi lobe, tri lobe, batwing, etc.
- Dry run protection.
- Pressure control.
- Anti seize rotor material.
- Foam filled or solid tires.



MODEL	PORT SIZE	FLOW @ RPM	PRESSURE	HP
Yebo 50	2"	0 - 48 GPM @ 530 RPM	100 PSI	3 HP
Yebo 100	3"	0 - 98 GPM @ 530 RPM	100 PSI	5 HP
Yebo 160	3"	0 - 162 GPM @ 530 RPM	145 PSI	7.5 HP
Yebo 220	4"	0 - 217 GPM @ 530 RPM	100 PSI	10 HP
Yebo 350	4"	0 - 347 GPM @ 548 RPM	145 PSI	15 HP

